



This is a collaborative zine made by The CommUNITY Resistance Thinkspace, a group who meet up at Bradford University to share ideas & reflections about change, activism and power.

In September 2014, the group got together with artist Jean McEwan to explore the relationship between creativity, imagination and activism through play with words and images. This zine captures a snapshot of some of our personal and creative responses in photographs, words and pictures.

We hope you enjoy it.

BRADFORD

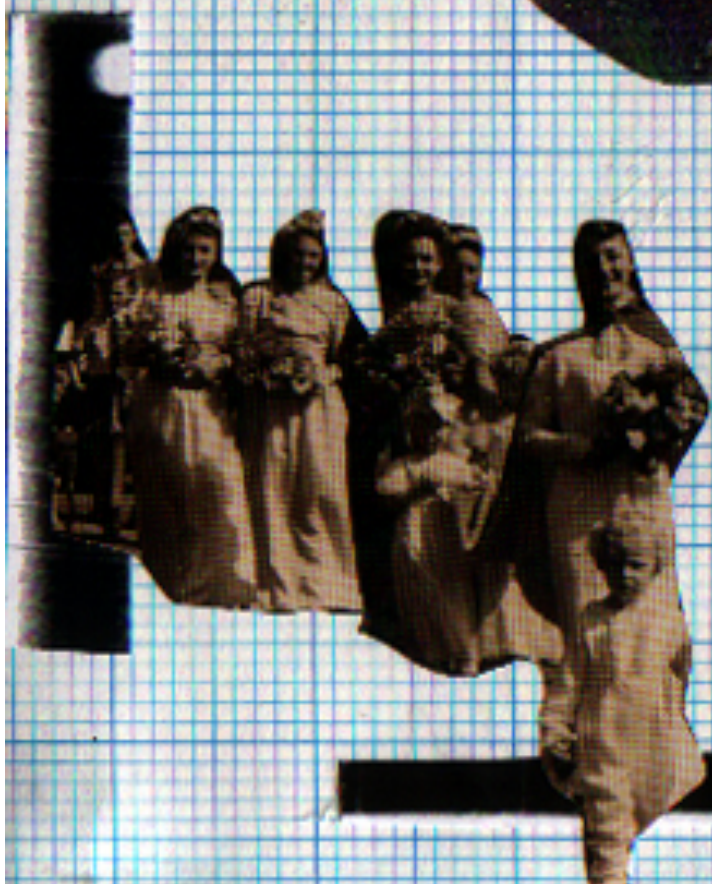
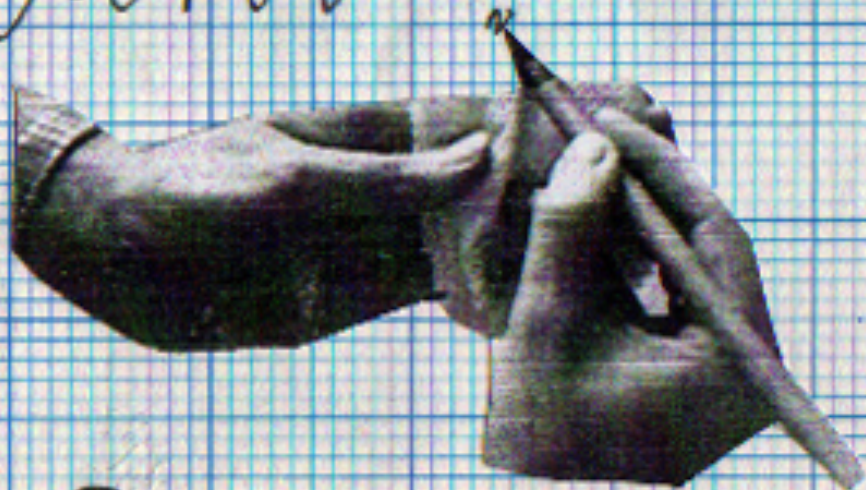
Wapping

Alex, Altaf, Arwa, Austin, Annie, Heather, Ian, Jean, Josie, Jude, Lisa, Lou, Penny, Naweed, Sarah-Jane, Sophie, Ute, Uzma

The CommUNITY Resistance Thinkspace is supported by the International Centre for Participation Studies, part of Peace Studies at Bradford University.

If you would like to find out more about the group, or to join us, contact Lisa Cumming at L.F.Cumming@bradford.ac.uk

what do
I want?



I want to talk about green ribbons.
When I moved to Bradford in 2013 the
EDL announced they'd be paying a
visit for their (un)usual spurious
reasons. I got the opportunity
to be involved in the
campaign

by Bradford
Women for
tying green
the city. What
the campaign
and how
whole
completely
Nothing

organi-
sed

Peace,
ribbon around

Struck me about
was it's simplicity
the city as a
owned the campaign
It was so powerful

was going to stop the
EDL from coming, but by the
same token the EDL would not
stop the city from being united.

The green ribbons are still up a year
later, reminder of a united city rejecting
ridiculous ideas in favour of unity.

A HOT-AIR BALLOON

THE ENCHANTED

CLIMB

A TREE

a heather moor



PATIENCE





Resistance

is the secret of joy

A sunburst in blues, this jellyfish relative called a blue button isn't one organism but many.

ANGRY

UNSEEN



DIFFERENT WAYS OF

HOW TO LIGHT A MATCH

I think Sometimes we miss the picture on who really has the power.

Why are Dark Things Warmer than Light Things?

LIVING

THE NEW DOOR THAT OPENED INTO THE TEMPLE OF KNOWLEDGE

when the world was created

WIRELESS

hot, clear sunshine,

TELEPHONE

as we grow up.

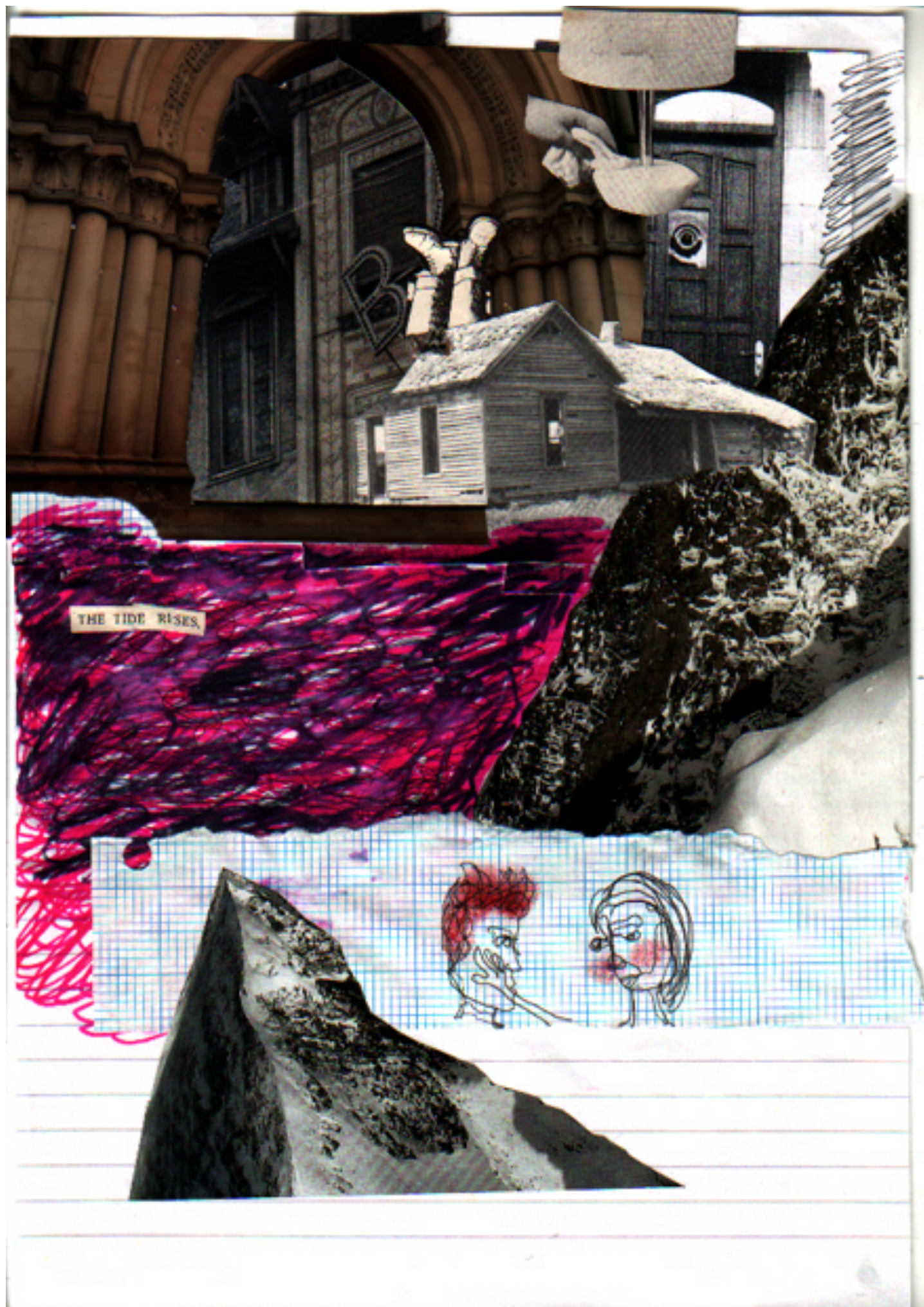
Why does the Whistle Change as the Train Comes Nearer?

THE GOLDEN TERRITORY THAT REACHES UP FAR INTO THE NORTH

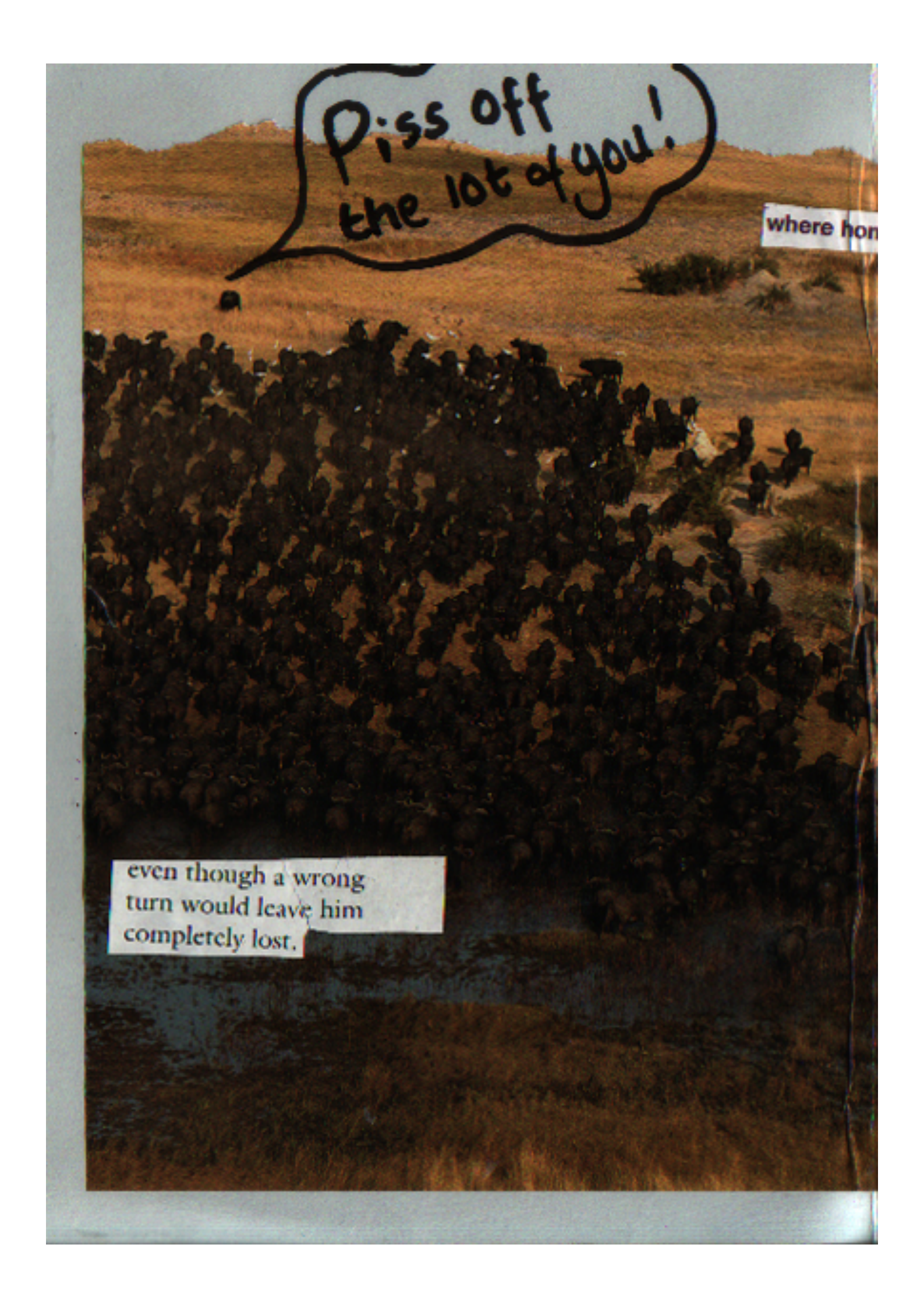
from the shore



W





A photograph of a vast savanna landscape. In the foreground and middle ground, a massive herd of wildebeest is gathered, appearing as a dense, dark mass. The ground is dry and yellowish-brown. In the background, there are rolling hills under a clear sky. A speech bubble is drawn in the upper left, containing the text 'Piss off the lot of you!'. A small white sign is visible in the upper right, partially cut off, with the text 'where hon'.

Piss off
the lot of you!

where hon

even though a wrong
turn would leave him
completely lost.

ne is.

Contemplat-
ing

in a cell of his own
is the

Solitary

Man

Welcome
TO THE
PLAYGROUND

Sometimes

You can just see it...





DOMINATED

HOW DEEP

POWER

REASON

IMAGINATION

STORIES

AUTHORITY

Beautiful Things

LEGENDS

Plain Answers to the Questions



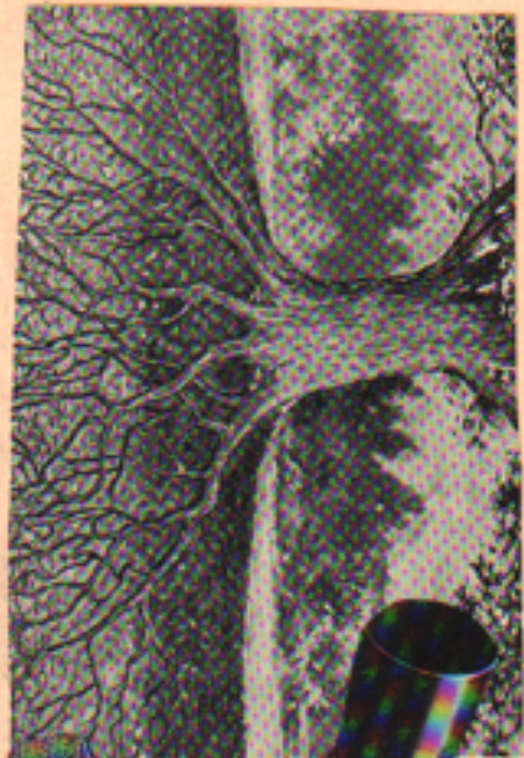
MAKING

IDEAS

HONOUR

RIGHTEOUSNESS

The Interests and Pleasures of Life



ART LIFE

trying to be a decent person

is just as important as trying

to be a good artist

eh

WHERE DOES ME AS
A PERSON END, AND
ME AS AN ARTIST
BEGIN?

DOES IT EVEN
MATTER



SEANCE OR Community Meetings



Is There a Difference?
or
Both Keeping You In
The Dark?



SOME

• HOW THINGS GROW

WHAT IS WRONG

VERY LITTLE PEOPLE

MANY strange and beautiful things

MARVELLOUS POWER

WHY OUR HISTORY IS SO FULL OF THE MUSIC OF LIBERTY

THINGS TO MAKE & DO

GROW

OURSELVES

FLOWERS

FOOD

CHANGE




how we can play

WITH THE SUN

AND

Our Place in the World

Made in England 

Re-order code EXB1053



Manufactured from paper approved by the
Forest Stewardship Council



9060251 970168

10 days, September 14 – Crisis, resilience, resistance

Ute Kelly

Permaculture convergence, London, 12th-15th

Gathered in a field

Conversations among friends

Three acres, a cow

Three acres, a cow?

Do we do resistance too?

Why, when, where, who, how?

Reading on trains (1)

A mirror, a horse

The fragility of things

And us, responding

Conference in London on 'Political Action, Solidarity and Resilience', London, 19th

Those who responded:
engaged with resilience,
thoughtfully active.

'I want you', she said,
'to ditch 'resilience' now.
How, then, to resist?

Reading on trains (2)

We've seen we can break
This changes everything, now
A rare catalyst?

People's climate march/anti-fracking lobby of the Labour party conference, Manchester, 21st

People's climate march
A day to change history?
Shops no less busy

Why, when, where, who, how?
Questions from my son, aged 9
Good questions. Answers?

(England, late 19th century)
www.threeacresandacow.co.uk



The People's Climate March, Manchester
September 21st 2014: photos by Ute Kelly



farewell to my friends

OURSELVES

the first clear thought

STORIES

A thing is dark,

giving out in a second

ACROSS THE WORLD

The Story of Where

surrounded

is blurred

their way the

in all these directions :

INVISIBLE

Double Yellow Line ...

Move on ...